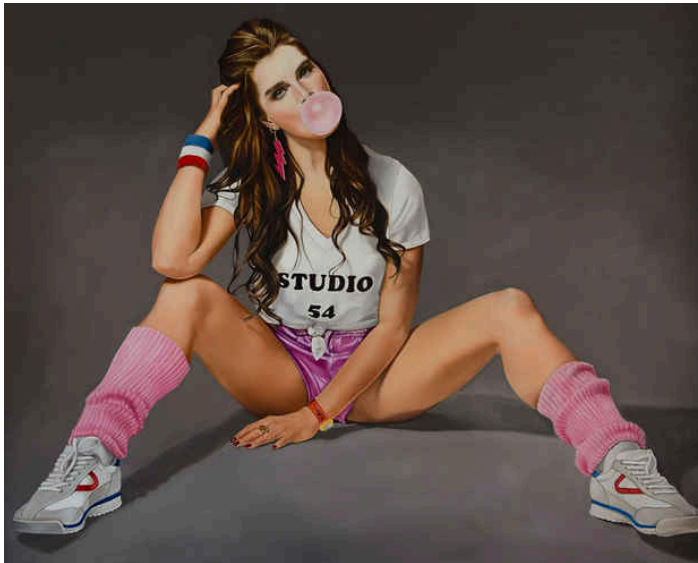


## Tara Lewis and Brooke Shields “Role Modeling”

Louis K. Meisel Gallery



[Image: Tara Lewis "Brooke" (2020) oil on polycotton linen, 48 x 60 in.]

### Ends in 20 days

Louis K. Meisel Gallery presents Role Modeling—an artistic collaboration between New York-based artist Tara Lewis and Brooke Shields. On display throughout May 2022, Role Modeling explores Shields’ vibrant contributions to Pop culture in the 1980’s through the playful portraiture of Tara Lewis.

The resulting body of artwork, which consists of paintings, drawings and digital works, depict Shields and her two daughters posing in a series of looks styled to capture the dynamism of that era. Creative synergy between Lewis and Shields drove the portrait concepts and compositions, which were seasoned with an array of props and wearables from Shields’ personal collection, including her original Calvin Klein jeans. References to Keith Haring and Studio 54, along with generic props that include visors, bubblegum and legwarmers, create mise-en-scènes that explore a particular coming of age moment in youth culture.

For Tara Lewis, this series is an extension of her recent paintings, which depict models engaging with props as a means to explore identity, perceptions of beauty and self-awareness. With an underlying rawness, her portraits exude an irreverence that create viewer engagement. Role Modeling is Lewis’ first solo exhibition at the Louis K. Meisel Gallery; she has been actively exhibiting in New York since 2010.

### Media

**Schedule**

from May 04, 2022 to May 27, 2022

Opening Reception on 2022-05-04 from 18:00 to 21:00

---

**Fee**

Free

**Venue Hours**

From 10:00 To 18:00

Closed on Mondays, Sundays

Note: July: Tuesday through Friday, 10am - 5pm, August: By appointment only

---